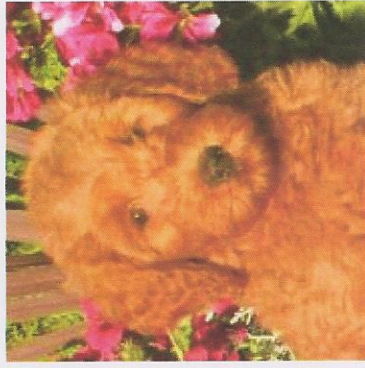


Certificate Of Dog Registration

Name Signature's Endless Hope (Trixie) Registration Number ALAA-024412
 Breeder Dale & Amy Lindgren ALAA Kennel Signature Labradoodles
 Owner Dale & Amy Lindgren ALAA Member ALAA-001896-0310
 91220 N Harrison PO Box 8072
 Coburg, OR 97408 USA



GG Sire: Willsons Honest Abraham
 [005870]
 apricot/red
 Poodle
 GG Dam: Willsons Chica
 ALAA-005871
 red
 First Generation Labradoodle (F1)

GG Sire: Hale's Mr Jr
 ALAA-004588
 red
 Labradoodle
 GG Dam: La Feme Chocollatiere
 ALAA-003492
 brown
 Poodle

GG Sire: Rutlands Uluru*
 ALAA-000417
 apricot/red
 Australian Labradoodle
 GG Dam: Rutlands Redd Russet*
 ALAA-000543
 apricot
 Australian Labradoodle

GG Sire: Tassies Hugo
 ALAA-007287
 café
 Australian Labradoodle
 GG Dam: Tassies Amber
 ALAA-007285
 cream
 M Australian Labradoodle

G Sire: Willsons Chico of Puppy Love
 ALAA-005855
 red
 Labradoodle
 G Dam: Hale's Fancy Face
 ALAA-006519
 red
 Labradoodle

Sire: Noble Vestal Masterpiece
 ALAA-020905
 red
 Multigenerational Labradoodle

Birth Date 03 June 2011

Identification
 Chip 0A01440042

Signature's Endless Hope (Trixie)
 Female, Entire
 Apricot/red
 Australian Labradoodle
 19 inches
 Fleece

G Sire: US Washington Titan
 [019993]
 M Australian Labradoodle
 G Dam: Gemstone's Opal
 ALAA-009299
 cream
 M Australian Labradoodle

Dam: Gemstone's Tawny
 ALAA-019469
 cream/apricot
 M Australian Labradoodle

ALAA Registrar Signature H. A. Chavella Date 20 September 2011

Australian Labradoodle Association of America, Inc. www.ilainc.com

This registration information is based upon information received and reviewed by the ALAA. The ALAA cannot be responsible for incorrect pedigree information received from breeders. Please report any error or discrepancy to the ALAA registrar immediately.

